

PIVOTAL BUSINESS CENTER

±1,911 sqft
Office Suite For Lease

2372 East University Drive
Auburn, AL 36830



Available:

1,911 sqft of conditioned office
Brand New Construction

Uses:

Professional Office Space

Lease Rate:

Call for Lease Rate

Call to discuss options for buildout

Location:

Located just off the corner of East University Dr. and N Dean Rd. next to River Bank & Trust. Across From Mapco.

Summary:

1st floor office suite in brand new professional office building. Delivered as a conditioned vanilla shell with a tenant improvement allowance for some of the buildout.

SPACE FOR LEASE



COMPREHENSIVE
COMMERCIAL

2680 Corporate Park Dr.
Opelika, AL 36801
www.comcre.com

Craig Melton
Broker
(334)559-4914 Mobile
comprehensivcre@gmail.com

±1,911 SF Professional Office Space for Lease



YEAR BUILT/RENOVATED:

2023

LOT SIZE:

1.30 Acres

Occupancy:

5 Tenants Total once complete

DAILY TRAFFIC COUNT:

+/- 21,000 VPD

PROPERTY INFO:

Great access just off of E University Dr
and N Dean Rd

Convenient to all of Auburn/Opelika
Common Area Bathrooms

Plenty of Natural light

Ample Parking

Adjacent to River Bank & Trust

Located in rapidly growing NW Auburn

Monument Sign with Company Logo

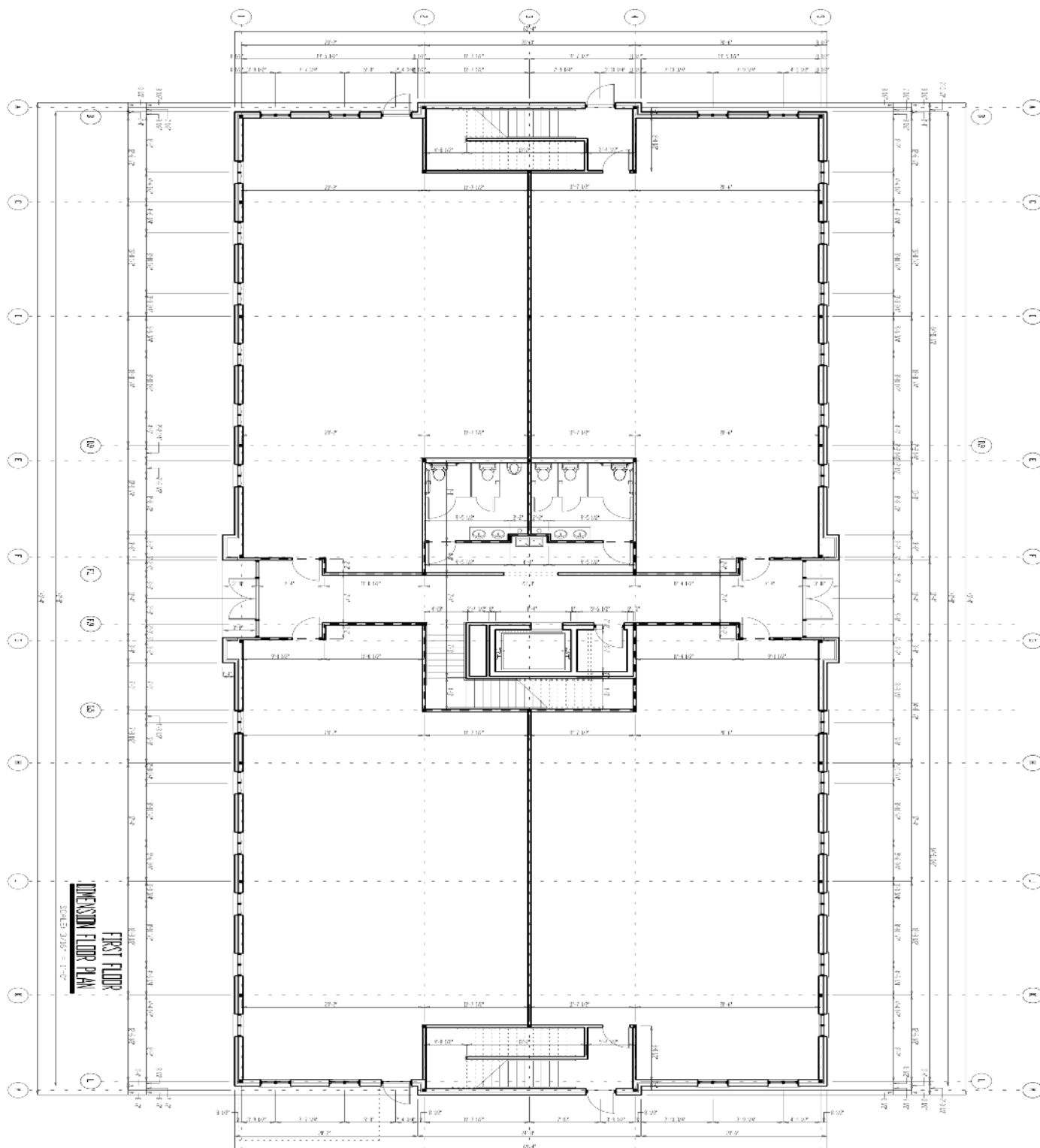


COMPREHENSIVE
COMMERCIAL

2680 Corporate Park Dr.
Opelika, AL 36801
www.comcre.com

Craig Melton
Broker
(334)559-4914 Mobile
comprehensivcre@gmail.com

±1,911 SF Professional Office Space for Lease



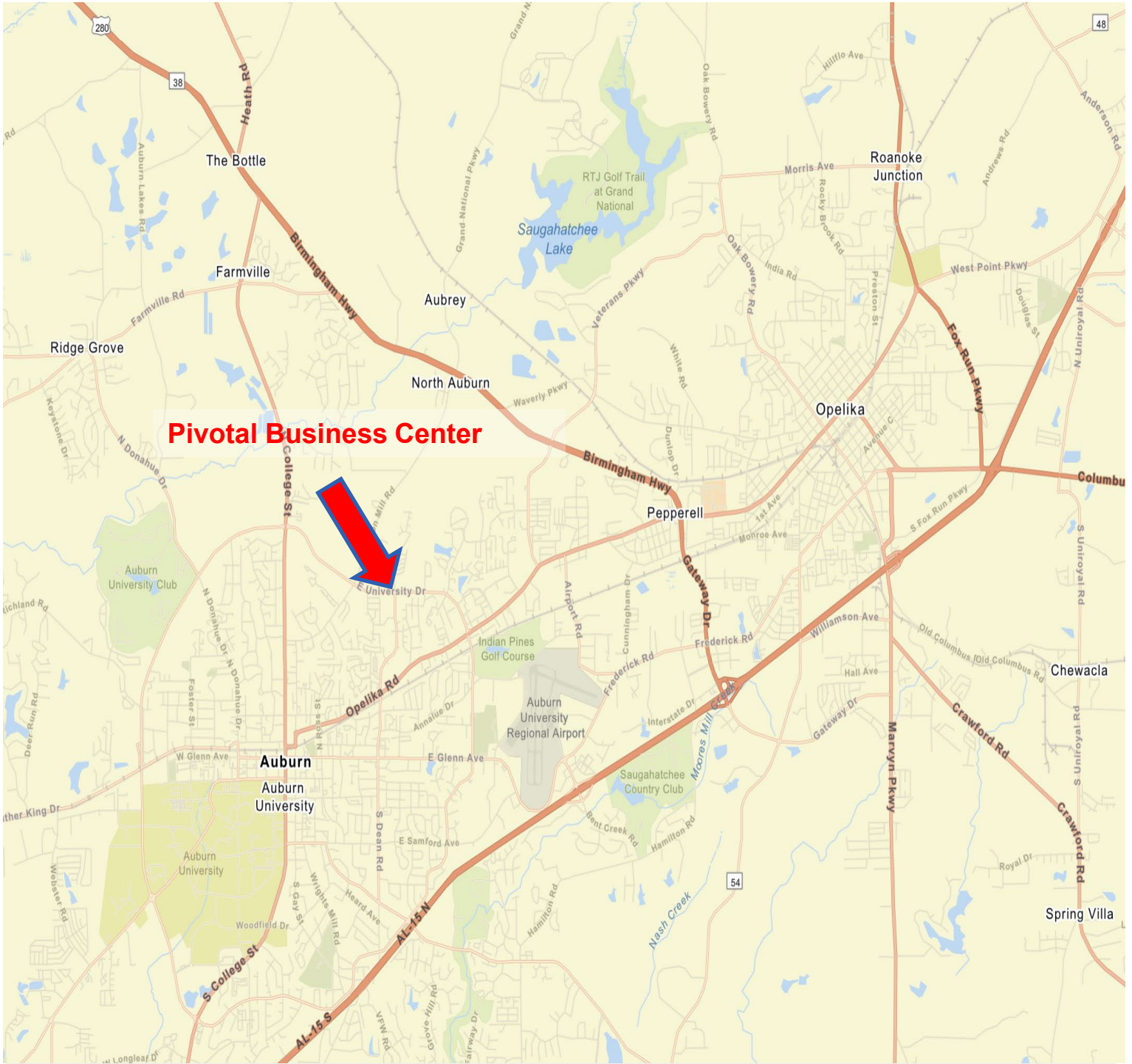
COMPREHENSIVE
COMMERCIAL

2680 Corporate Park Dr.
Opelika, AL 36801
www.comcre.com

Craig Melton
Broker
(334)559-4914 Mobile
comprehensivcre@gmail.com

±1,911 SF Professional Office Space for Lease

Street Map



COMPREHENSIVE
COMMERCIAL

2680 Corporate Park Dr.
Opelika, AL 36801
www.comcre.com

Craig Melton
Broker
(334)559-4914 Mobile
comprehensivcre@gmail.com