

Corner of Cox Rd & Corporate Pkwy

Hard Signalized Corner +/- 3.17 acres



Available:

+/- 3.17 Acres

Use/Zoning:

Interstate Commercial

Purchase price:

\$1,300,000

Location:

Just off I-85 at Auburn Exit 50. The hard Northwest corner at the intersection of Cox Road and Corporate Parkway. Caddy Corner from Buc-ee's

Summary:

Exceptional commercial parcel in rapidly growing Auburn. Surrounded by three of Auburn's growing business parks. Across from brand new state of the art Buc-ee's

2680 Corporate Park Dr.
Opelika, AL 36801
www.comcre.com

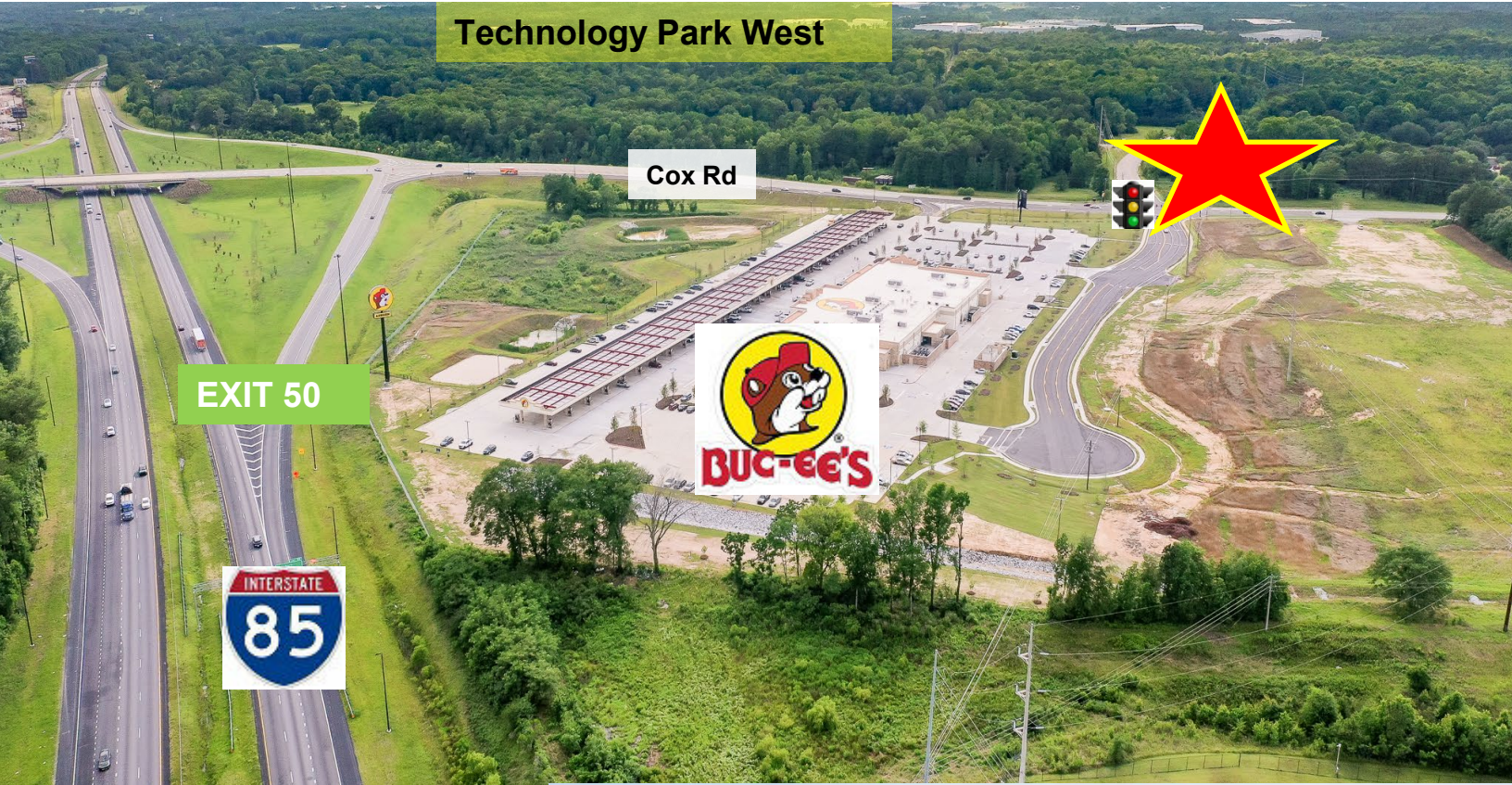
Craig Melton
Broker
(334)559-4914 Mobile
comprehensivcre@gmail.com



LAND FOR SALE

LAND FOR SALE

Hard Signalized Corner +/- 3.17 acres



LOT SIZE:
+/- 3.17 acres

DAILY TRAFFIC COUNT:
I-85 +/- 37,000 VPD
Cox Rd +/- 11,000

PROPERTY INFO:
Great access just off Interstate 85
Convenient to all of Auburn/Opelika
Surrounded by growing technology parks



2680 Corporate Park Dr.
Opelika, AL 36801
www.comcre.com

Craig Melton
Broker
(334)559-4914 Mobile
comprehensivcre@gmail.com

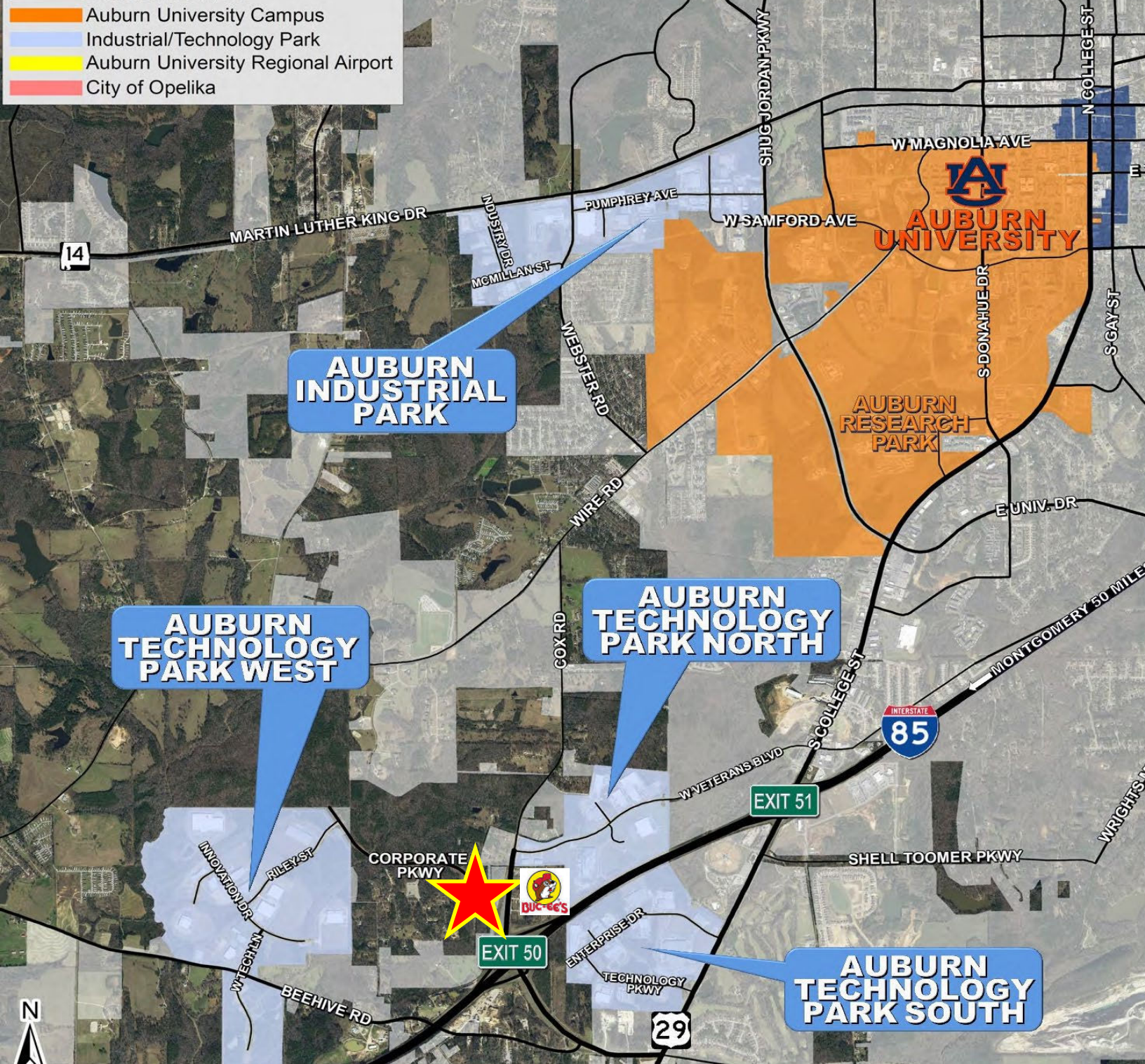
LAND FOR SALE

Hard Signalized Corner +/- 3.17 acres

LEGEND

- City of Auburn
- Downtown Auburn
- Auburn University Campus
- Industrial/Technology Park
- Auburn University Regional Airport
- City of Opelika

AUBURN INDUSTRIAL & TECHNOLOGY PARK LOCATION



COMPREHENSIVE
COMMERCIAL

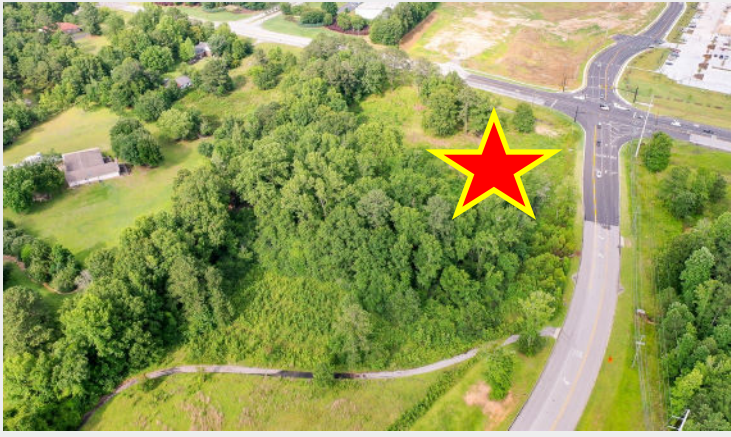
2680 Corporate Park Dr.
Opelika, AL 36801
www.comcre.com

Craig Melton
Broker
(334)559-4914 Mobile
comprehensivcre@gmail.com

LAND FOR SALE

Hard Signalized Corner +/- 3.17 acres

Property Photos



**COMPREHENSIVE
COMMERCIAL**

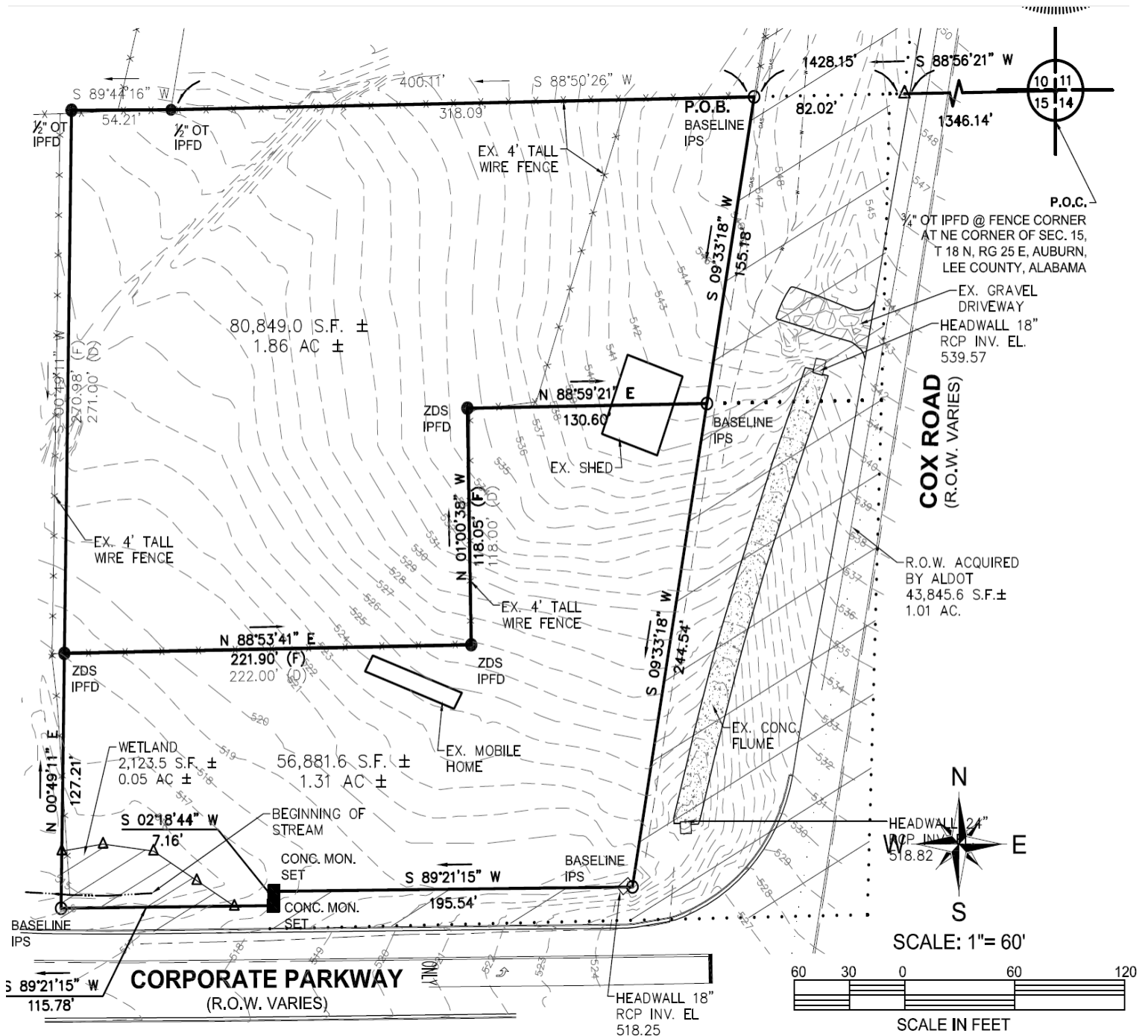
2680 Corporate Park Dr.
Opelika, AL 36801
www.comcre.com

Craig Melton
Broker
(334)559-4914 Mobile
comprehensivcre@gmail.com

LAND FOR SALE

Hard Signalized Corner +/- 3.17 acres

Survey and Topo



2680 Corporate Park Dr.
Opelika, AL 36801
www.comcre.com

Craig Melton
Broker
(334)559-4914 Mobile
comprehensivcre@gmail.com